



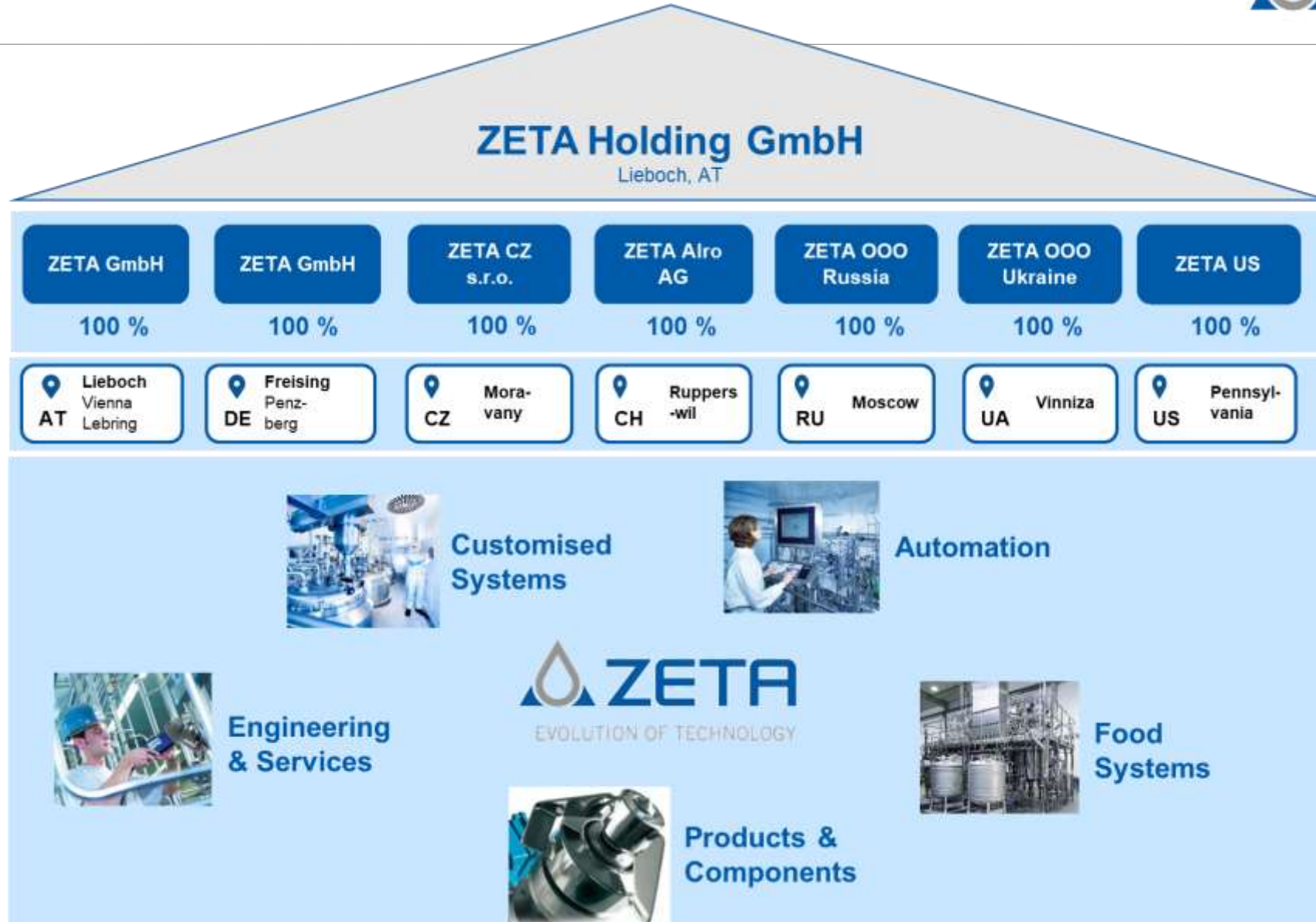
EVOLUTION OF TECHNOLOGY

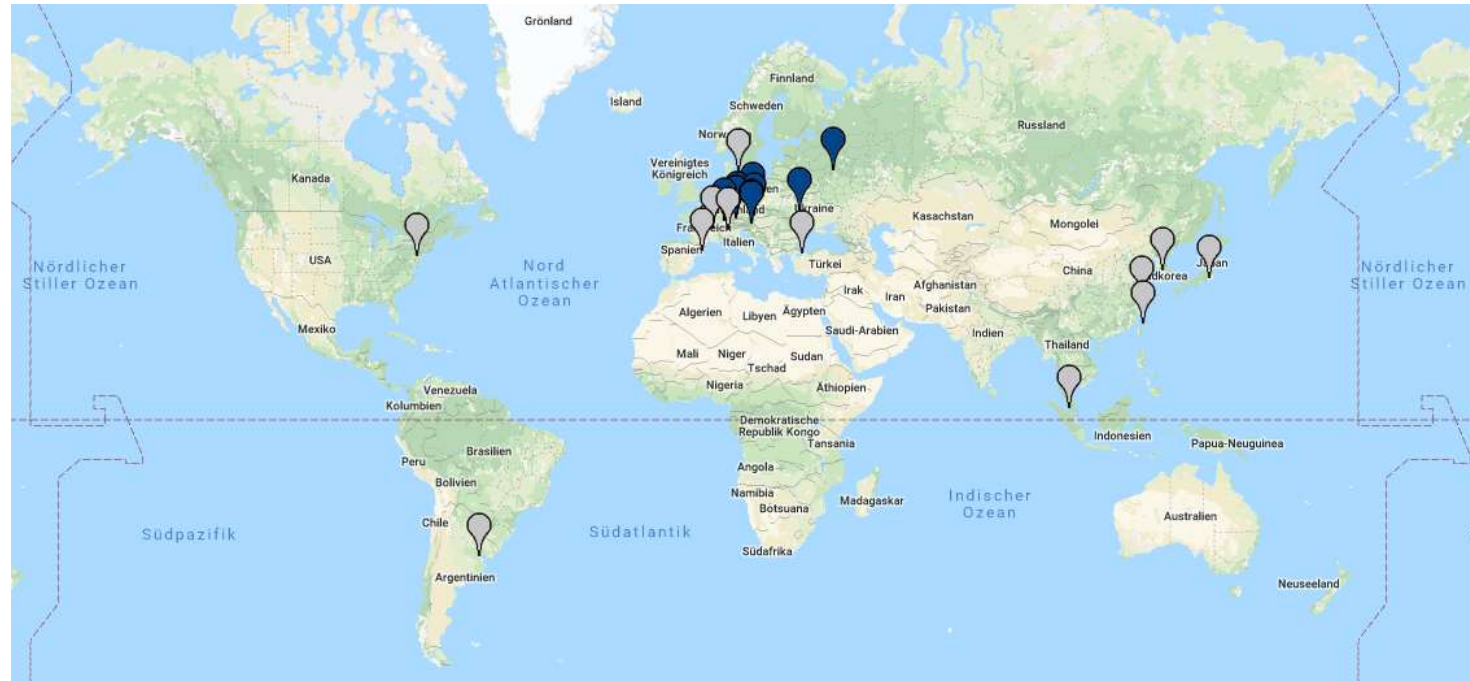
Customised technology for pharmaceutical and biotechnological plants

ZETA Group

- Key supplier of biopharmaceutical turnkey projects
- Established in 1989, 30 years of experience
- Headquarters in Lieboch/Graz, Austria, Europe
- Worldwide presence through branches and partners
- More than 680 employees, whereof 450 are engineers







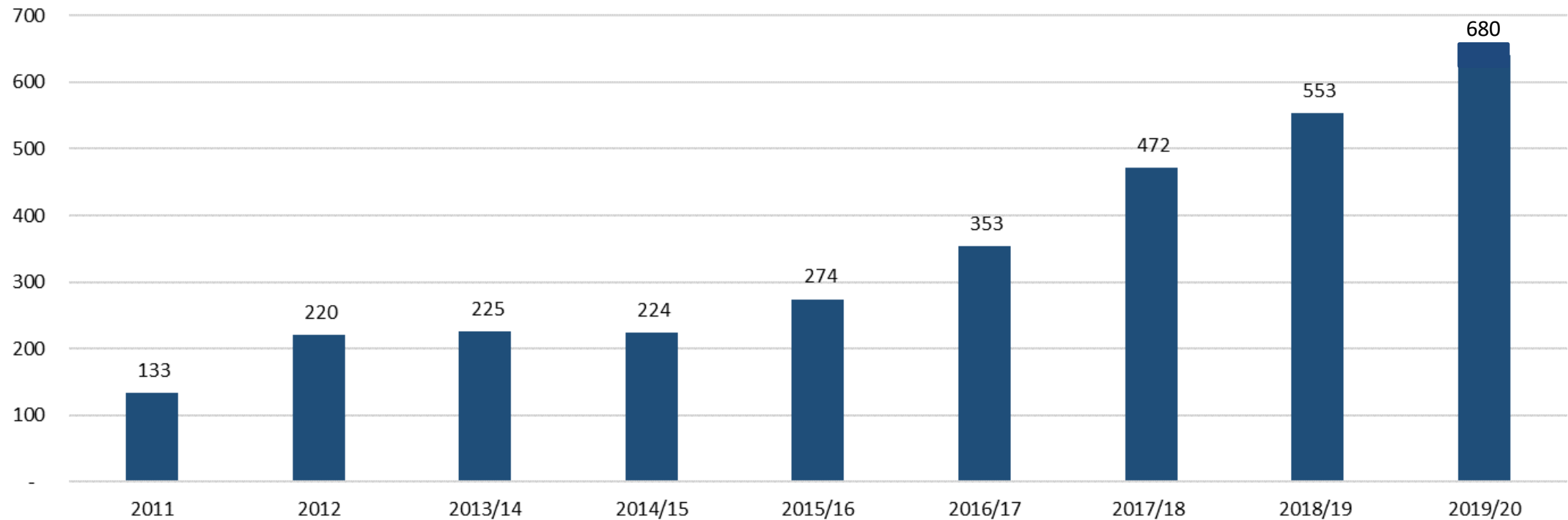
- **STEQ, Philadelphia, USA**
- **Access Tech, Argentina**
- **Nordic Engineering ApS, Denmark**
- **IGE Ingenieros sl., Spain**
- **QS Group, Italy**
- **Pharmasep, France**
- **IDL Technological Materials & Sytems, Turkey**
- **Xact Engineering, Singapore / Malaysia**
- **Andgel Industrial (Shanghai) Co., Ltd., China**
- **JID Corp, South-Korea**
- **ITOCHU MACHIE-TECHNOS CORP., Japan**
- **Attrra Giand Industrial Co. Ltd, Taiwan**

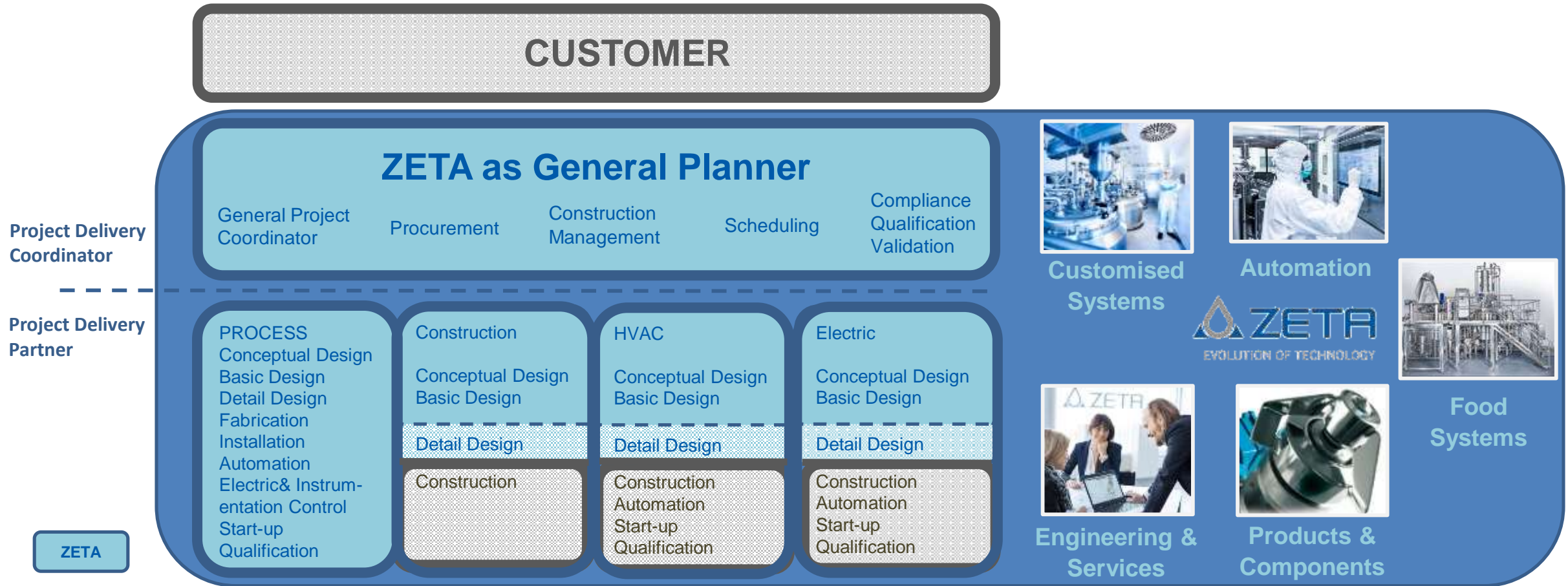


A word cloud of selected customers, with the text arranged in a roughly circular pattern. The words are in various sizes and orientations, representing the relative importance or frequency of each customer. The largest words are Roche / Genentech, Octapharma, Geropharm, and Sanofi.

Roche /
Genentech
Octapharma
Boehringer
Ingelheim
Lonza
Bayer
Fresenius
Biotest
B.Braun
GSK
UCB
Alexion
Takeda
Johnson & Johnson
Hengrui
TEVA
Novo Nordisk
Tetra Pak
Pharmstandard
Petrovax
Rentschler
Innovent
Biogen
R-Pharm
Pfizer
Vibalogics
Novartis
Endocrine
CTTQ
Amgen
MSD
GE Healthcare
Tiantan
CSL Behring
Pall
Genzyme
Samsung
Schülke + Mayr
Sanofi

ZETA group - development employee
internal+ external employees





Management of complexity

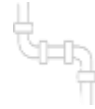
Know-how generator and problem solver for the customer

What drives us...



Smart Engineering Services & Digital Products

ZETA starts to offer services and products in the field of digitalization



Piping Specialist

ZETA was a partner for stainless steel piping in pharma-, food and other industries



Engineering Services

ZETA started to offer its expertise in the field of engineering services

until
2009

2012

Aseptic Process Equipment

ZETA starts as solution provider for plants in pharma and biotech for aseptic processes



2014

Vertical System Integration

ZETA refined the automation and software competences to deliver from I/O to Batch Software



2016



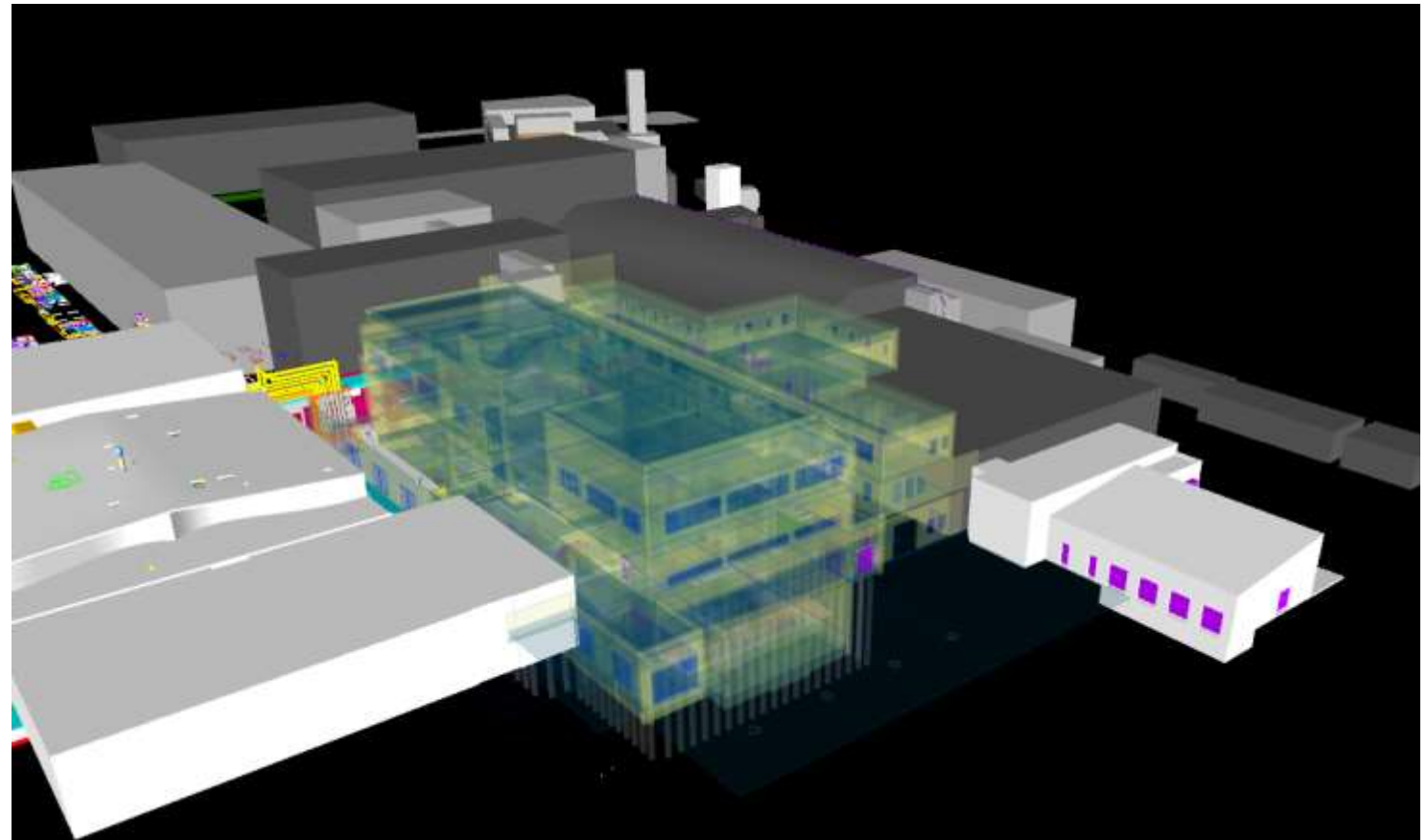
GP & Smart Engineering

ZETA improved the software environment for supporting integrated engineering projects of large sizes and to foster digitization

2018

NOW
and in future

- ⚠ Plasma Fractionation
- ⚠ Engineering Procurement Construction Management
- ⚠ Total engagement of ZETA: 250.000h
- ⚠ Concept-, Basic-, Detaildesign, Fabrication, Automation, Commissioning, Construction Management





Project Management and Progress Control

 **General Planning:** Architecture, Technical building equipment (black media, HVAC, electrical engineering, clean rooms etc.), process and clean media

Construction Management

Process Equipment and Clean Media including CIP

- Ultrafiltration
- Microfiltration
- Homogenization
- Buffer preparation
- Buffer storage
- Bottle fill, bottle wash



